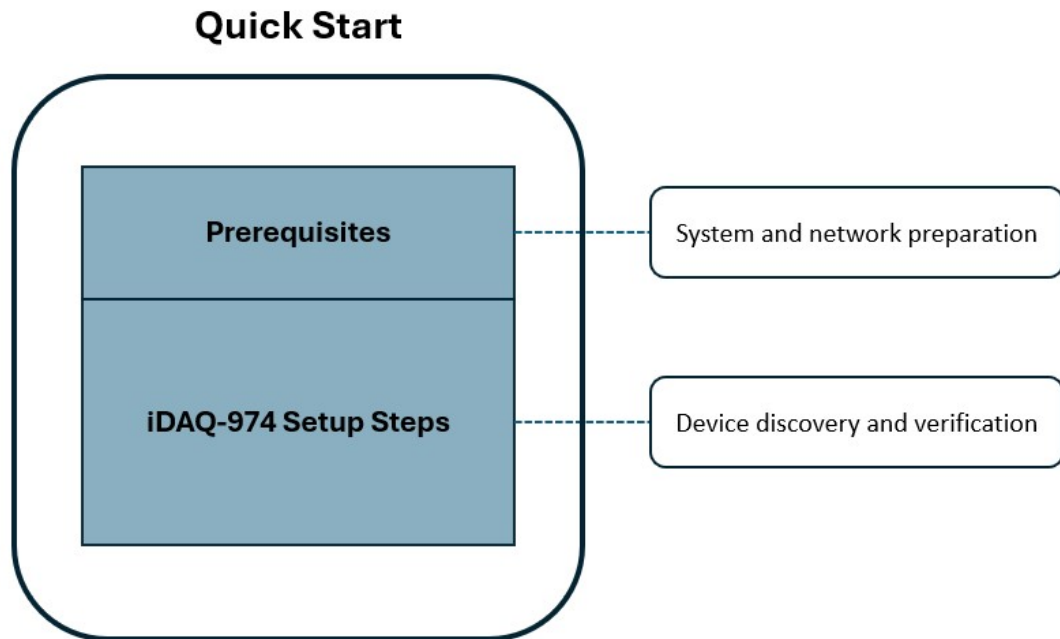


[iDAQ-974 Quick Start]

This Quick Start is designed to help users quickly set up and validate the iDAQ-974 system, enabling successful device discovery, module verification, and basic network operation understanding.



[Prerequisites]

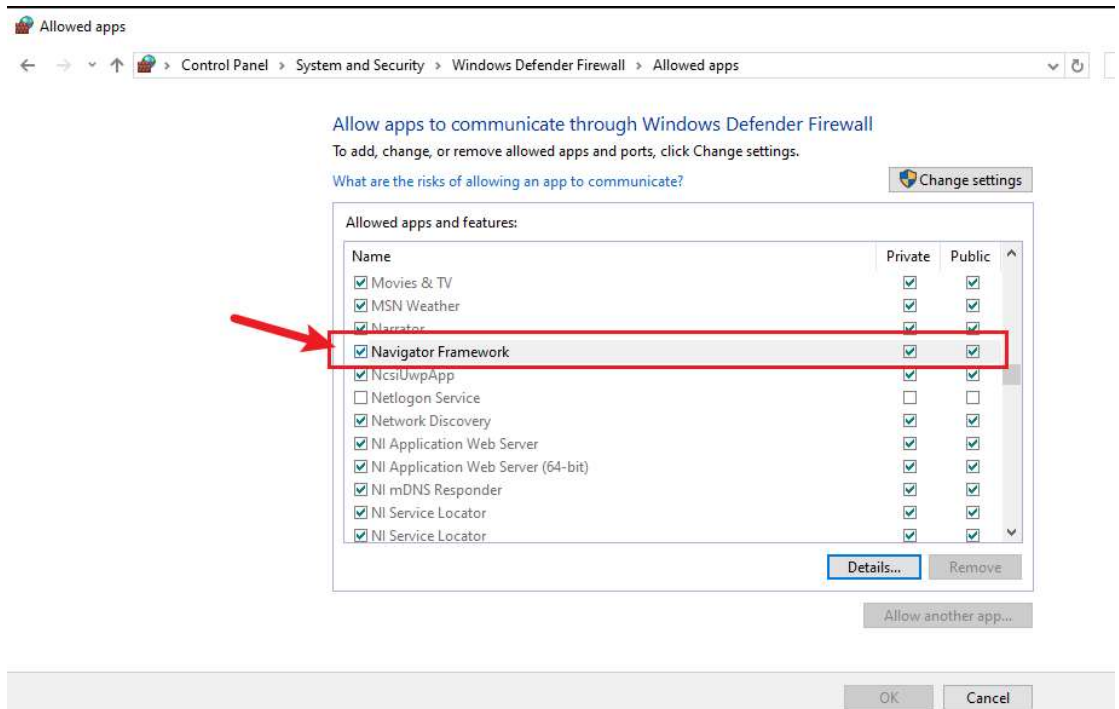
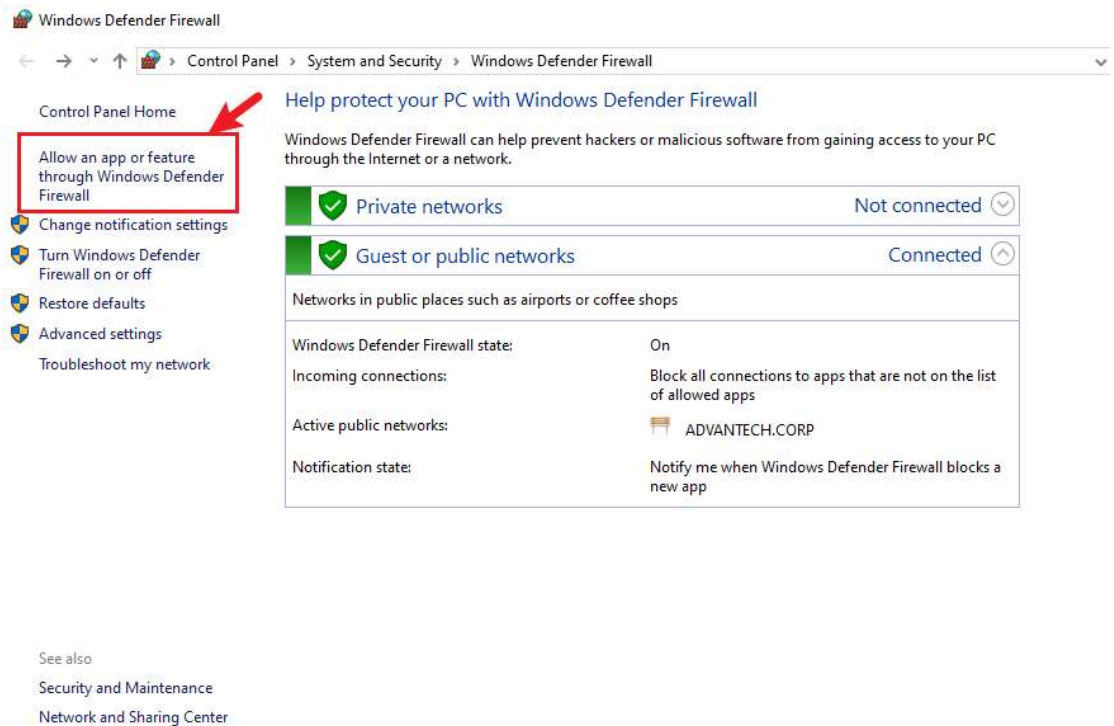
Before starting, ensure the following conditions are met:

- iDAQ-974 is powered on and connected via Ethernet to the same subnet as the host PC
- iDAQ-974 drivers and Navigator are properly installed
- Network bandwidth is sufficient to support the intended data acquisition throughput; please refer to the FAQ section **[Network Bandwidth Estimation for Data Acquisition with iDAQ-974]** for details
- Firewall Permission for Initial Use of iDAQ-974

For initial use of the iDAQ-974, firewall permission must be granted to allow network discovery and communication.

If the permission was not granted during the first launch, it can be manually enabled via Windows Defender Firewall → Allowed apps by

allowing Navigator Framework.



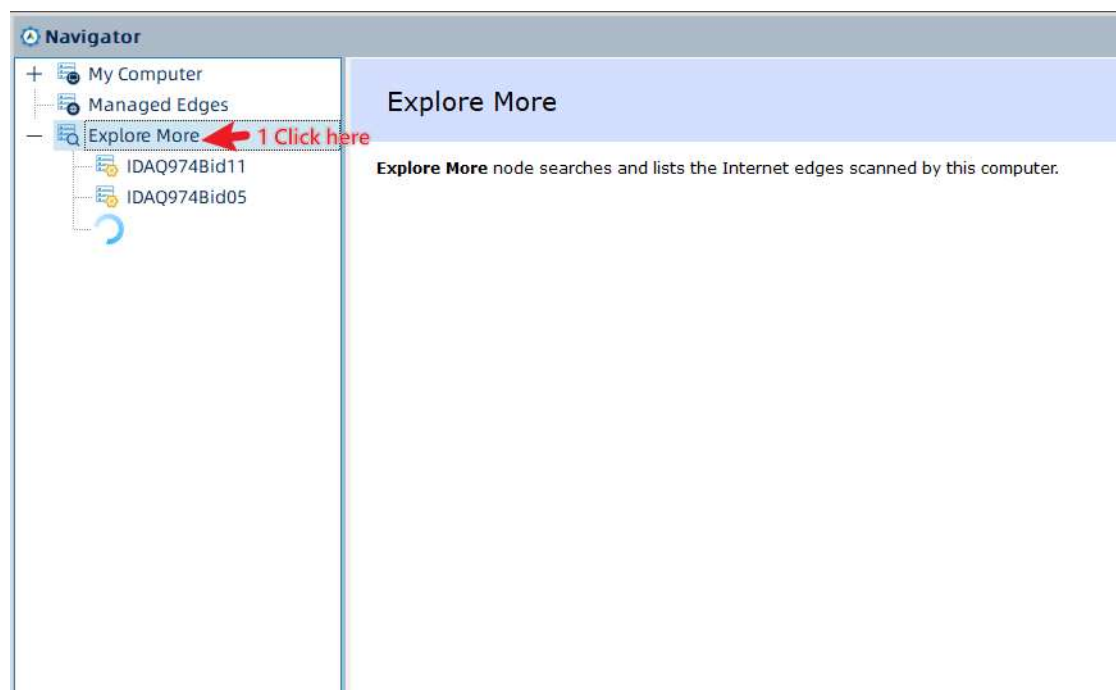
Once all Prerequisites are met, follow the steps below to discover the iDAQ-974 on the network, add the device to the managed list, and verify that all installed modules are correctly recognized and ready for operation.

[iDAQ-974 Setup Steps]

The following setup steps guide users through discovering the iDAQ-974 on the network, adding the device to the managed list, verifying the chassis and installed modules, and confirming that the system is correctly recognized and ready for operation.

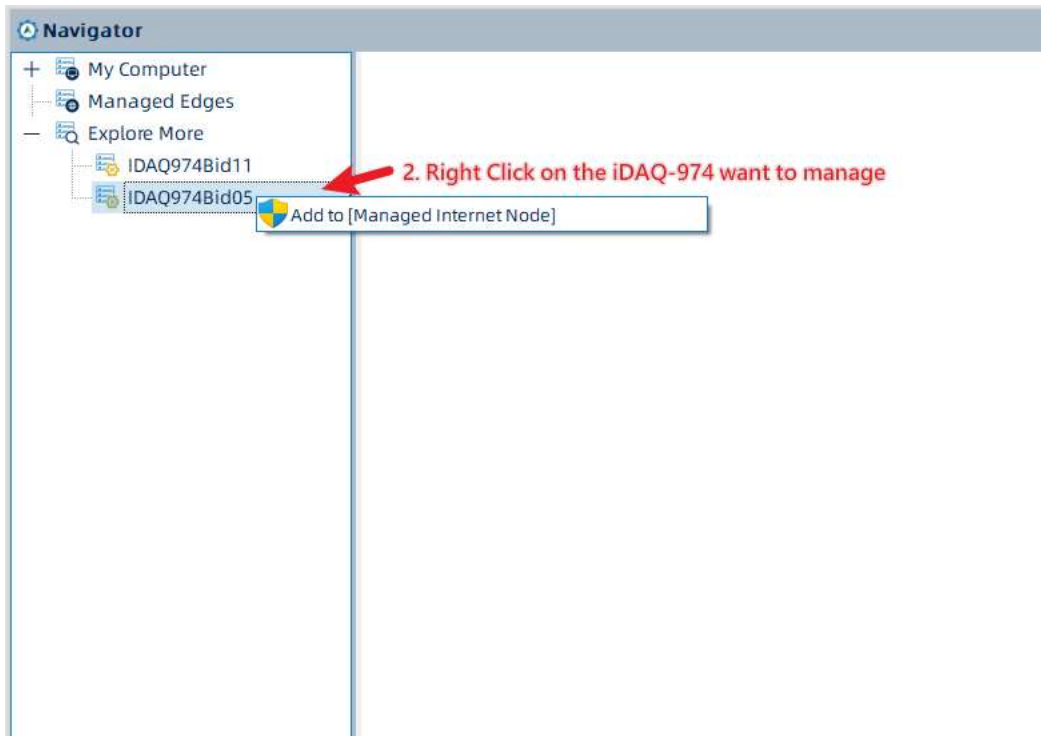
Step 1. Discover iDAQ-974 on the Network

In the Navigator tree, click Explore More. The system scans the current subnet and lists all detected iDAQ-974 devices.



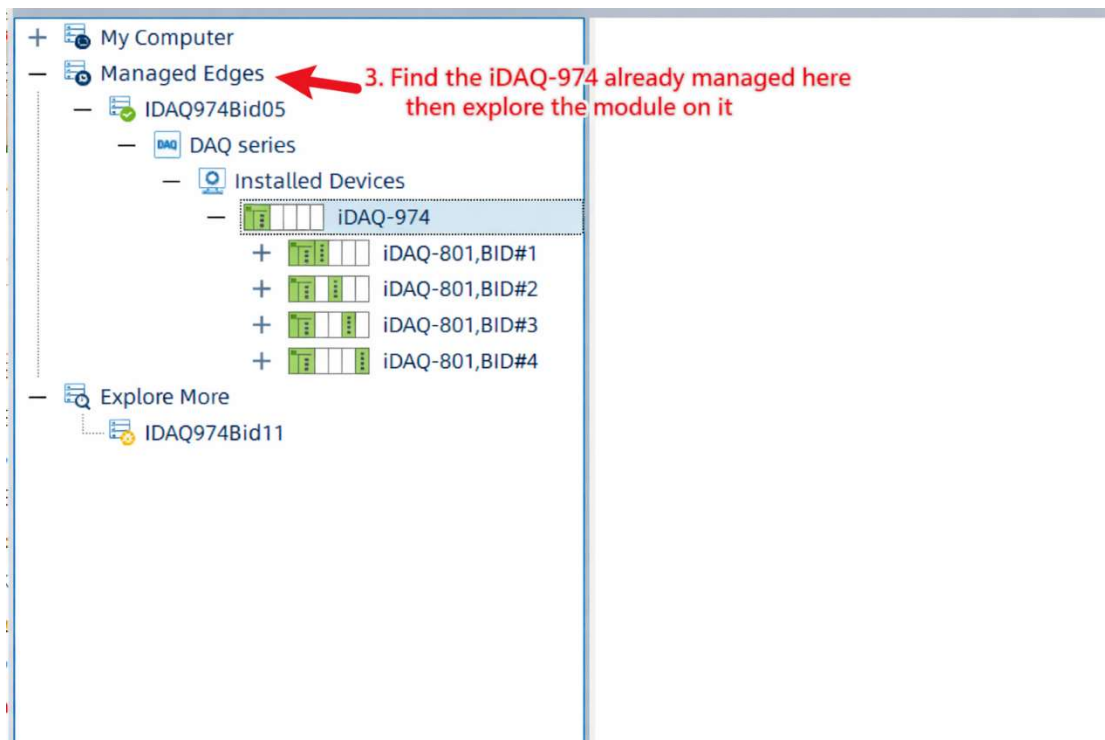
Step 2. Add iDAQ-974 to Managed Edges

Under Explore More, locate the target iDAQ-974 device. Right-click the device and select Add to [Managed Internet Node]. This registers the device into the local management tree for further configuration and module access.



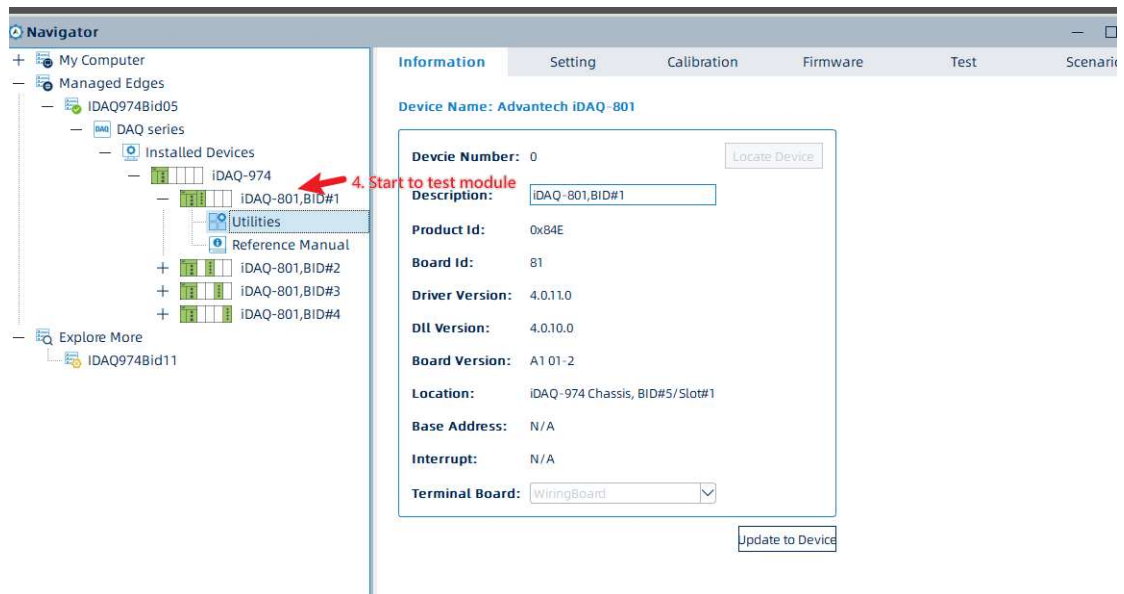
Step 3. Verify Chassis and Installed Modules

Switch to Managed Edges and expand the corresponding iDAQ-974 node. Under DAQ series → Installed Devices, all installed modules are listed according to their slot (BID) positions.



Step 4. Access Module Page and Perform Validation

Click the target module (e.g., iDAQ-801, BID#1). The Information page displays key hardware and software details, including Product ID, Board ID, Driver Version, and Slot Location.



Step 5. Ready for Operation

After completing these steps, the iDAQ-974 system is fully registered and ready for application development or system integration.