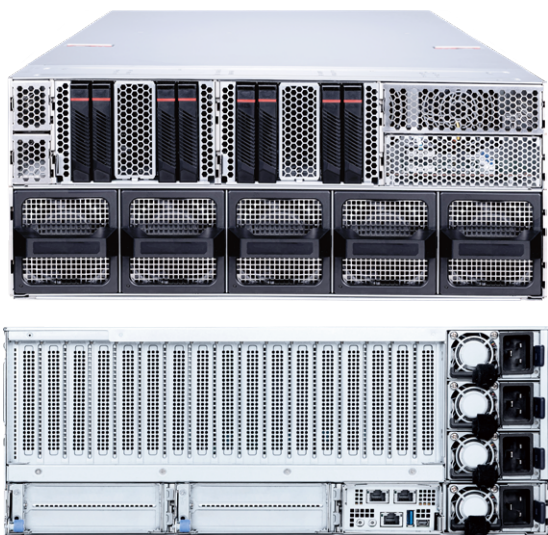


CG480-S6053

NVIDIA MGX™ 4U GPU Server Platform



SPECIFICATIONS

Dimensions (Width x Height x Depth)

438.5mm (17.2") Wx 175mm (6.88") Hx 800mm (31.4") D

Processor

Dual AMD EPYC™ 9005 Series processors, up to TDP 500W

Memory

(24) DDR5 DIMM slots, 12 channels(1DPC), RDIMM/RIMM-3DS
- Max. Frequency 6400MT/s
- Max. Capacity per DIMM: 256GB

Expansion Slots

(8) PCIe 5.0 x16 FHFL double wide slots (through PCIe switch)
(4) PCIe 5.0 x16 FHFL single wide slots (through PCIe switch)
(1) PCIe 5.0 x16 FHFL single wide slot (from CPU0)

Networking

(2) 10GBase-T Ethernet ports with Intel® X710-AT2 (NCSI supported)

Storage

(8) Front hot-swap 2.5" U.2 PCIe 5.0 x4 NVMe drive bays (through PCIe switch)
(2) 2280/22110 PCIe 3.0 x2 NVMe M.2 ports

Server Management

(1) 1000Base-T Dedicated Server Management port
ASPEED AST2600 with AMI MegaRAC based firmware supporting IPMI 2.0 and DMTF Redfish API
Dual BIOS and dual BMC
eMMC for local BMC storage media

Security

Chassis Intrusion
On-board TPM2.0

4U AI Server with NVIDIA MGX™ and AMD EPYC™

The CG480-S6053 Series GPU Server is engineered for high-performance computing and AI workloads, featuring a switching GPU topology that supports up to eight dual-slot GPU accelerators within a 4U rackmount chassis. Powered by dual AMD EPYC 9005 Series processors, the system is based on the NVIDIA MGX modular architecture, enabling flexible integration of GPUs, CPUs, and DPUs. This modular design allows for optimized system configurations tailored to diverse enterprise data center applications, including AI training, inference, and data analytics.

Applications

Training, Fine-Tuning

LLM Inference

NVIDIA Omniverse™

Hardware Root of Trust - Microchip CEC1736 supported (optional)

Front I/O

(8) Hot-swap 2.5" U.2 drive bays

Rear I/O

(1) 1000Base-T Dedicated Server Management port
(2) 10GBase-T Ethernet ports
(1) USB 3.0/2.0 Type-A port
(1) Mini Display port
(1) Power LED button
(1) UID LED button

Power Supply

(3+1) Redundant 3200W CRPS 80 PLUS Titanium

Cooling

(2) EVAC air cooling modules for max. 500W CPU

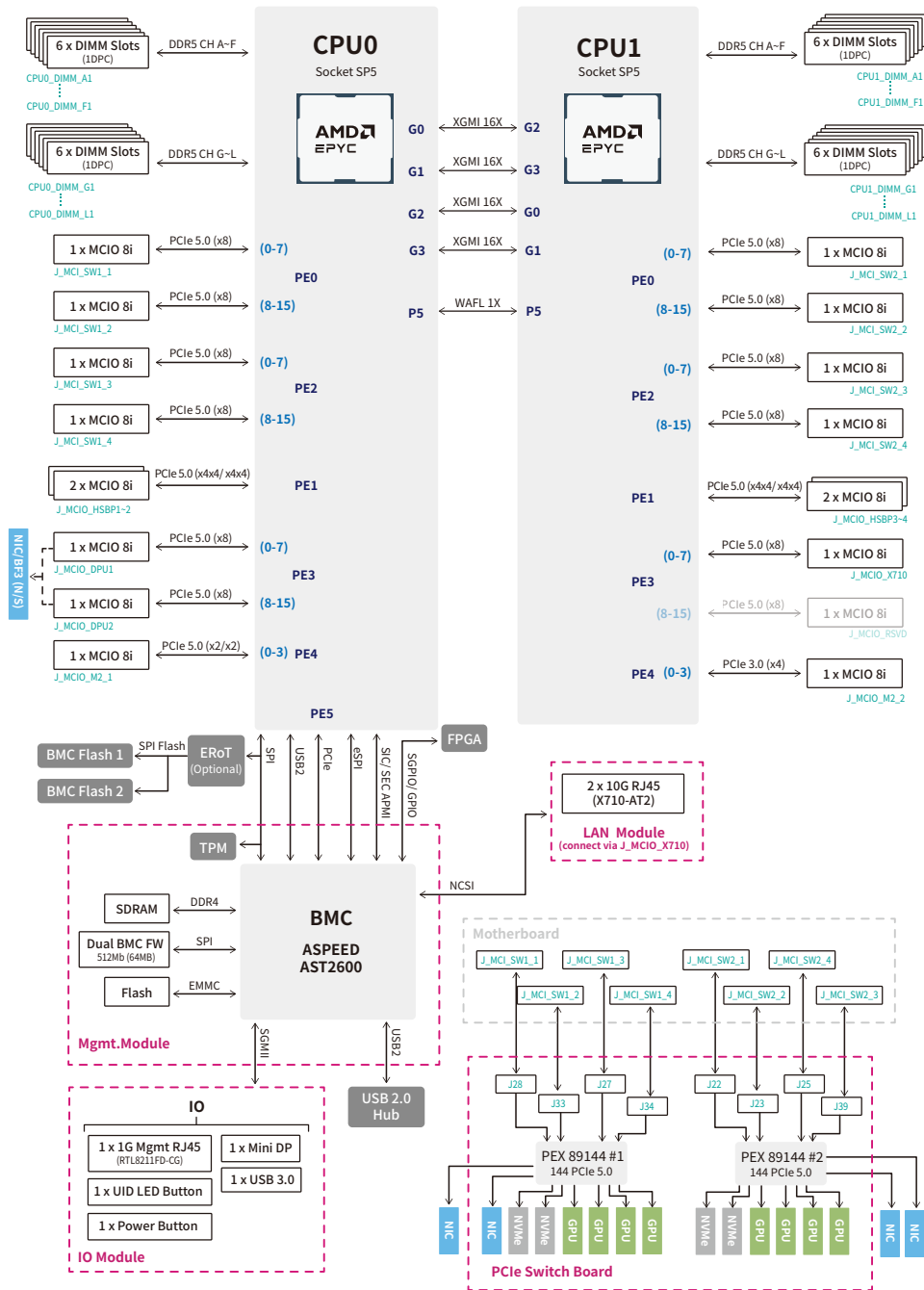
Environmental

Operating Temperature: 10°C ~ 35°C (50°F ~ 95°F)
Operating humidity: 8% to 85% (non-condensing)
Non-operating Temperature: -30°C ~ 60°C (-40°F to 140°F)
Non-operating Relative Humidity: 8% to 90% (non-condensing)

Regulatory

FCC (Class A), CE

CG480-S6053 System Block Diagram



Top View



Learn more about MSI servers, visit <https://eps.msi.com>

Specifications are subject to change without notice. Please visit our website for the latest information.